

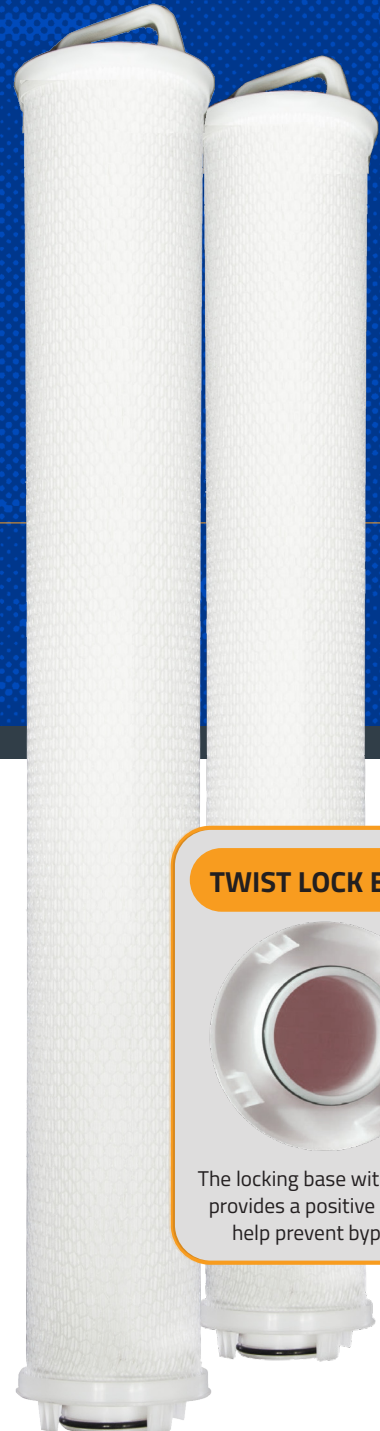


HF SERIES

High Flow Pleated Filter Cartridges

- 6.5" OD, 3" ID
- Vertical Pleat
- Outside to Inside Flow

Excellent dirt loading capacity extends life of cartridge and minimizes disposal and labor costs.



TWIST LOCK BASE

The locking base with o-ring provides a positive seal to help prevent bypass.

SUITABLE USES



Air & Gas



Desalination



Coolant



Water



Electronics



Coatings



Oil & Gas



Chemical



Pulp & Paper



Power



Marine



Equipment

COMPATIBLE HOUSINGS Compatible with Fil-Trek's High Flow Vertical (HFV) and High Flow Horizontal (HFH) housings.

ADDITIONAL FEATURES Capable of accommodating up to 500 gpm in a single filter. A unique locking base with o-ring provides a positive seal. Outside to inside flow suited for both high dirt loading and high flow applications. Absolute rated and available in microns ranging from 1 to 70 and are FDA compliant. Comparable to the 3M/CUNO High Flow series filters.

For more information, e-mail: info@fil-trek.com or visit Fil-Trek.com

HF SERIES

High Flow Filter Cartridge

- 6.5" OD, 3" ID
- Vertical Pleat
- Outside to Inside Flow



ELEMENT SPECIFICATIONS

REC. OPERATING PRESSURE 35 PSID (2.4 bar) @68°F (20°C)

MAX. OPERATING PRESSURE 50 PSID (3.4 bar) @68°F (20°C)

REC. FLOW RATE 50 GPM (40"), 75 GPM (60")
MAX. FLOW RATE 350 GPM (40"), 500 GPM (60")

DIMENSIONS

Outside Diameter 6.5" (16.5 cm)

Inside Diameter 3" (7.6 cm)

Lengths 20", 40", 60", 80"
(50.8 cm, 101.6 cm, 152.4 cm, 203.2 cm)

MAX. TEMPERATURE

Polypropylene 180°F (82°C)
 Polyester 240°F (115.5°C)
 Microglass 300°F (149°C)
 Cellulose 300°F (149°C)
 Cotton 300°F (149°C)
 Nylon 340°F (171.1°C)
 Nomex 400°F (204.4°C)

MEDIA SURFACE AREA 24ft² (2.2m²) per 20" length

MATERIALS AVAILABLE

Media	Outer Support	Core
Polypropylene	Polypropylene	Polypropylene
Polyester	Polyester	Steel
Microglass	Nylon	
Cotton	Steel	
Cellulose		
Nylon		
Nomex		

End Caps	O-Rings
Polypropylene	Buna-N
Microglass	EPDM
Nylon	Silicone
Steel	Viton

FDA LISTED MATERIALS All materials comply with FDA Title 21.

FLUID COMPATIBILITY

The below data is for reference only. Factors including length of exposure, concentration of fluid, temperature must also be considered. Please contact us to confirm process compatibility.

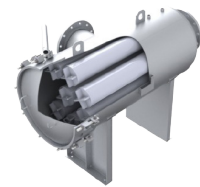
CHEMICAL	TEMPERATURE
ACETIC ACID 20%	160°F (71°C)
ALKANOLAMINES	140°F (60°C)
AMMONIUM HYDROXIDE 10%	160°F (71°C)
BLEACH 5.5%	120°F (49°C)
ETHYLENE GLYCOL	160°F (71°C)
HYDROGEN PEROXIDE	100°F (38°C)
METHYL ETHYL KETONE	70°F (21°C)
MINERAL OIL	70°F (21°C)
NITRIC ACID 20%	120°F (49°C)
POTASSIUM HYDROXIDE	140°F (60°C)
SODIUM CARBONATE	160°F (71°C)
SODIUM HYDROXIDE 70%	160°F (71°C)
SULFURIC ADIC 20%	160°F (71°C)
SULFURIC ACID 70%	160°F (71°C)
UREA	160°F (71°C)

*Based on polypropylene media w/ buna-n seals

COMPATIBLE HOUSINGS

HIGH FLOW VERTICAL AND HORIZONTAL HOUSINGS

Available in ASME code and non-code designs, highly customizable housing, vertical and horizontal orientation. Flow rates up to 8750 GPM. Available in a variety of materials, and headlift/closure options. Duplexing and skid systems available.



[View HFV Details](#)

[View HFH Details](#)



55 Stafford Court, Cambridge, ON N1T 1B3 P (519) 623-7448 F (519) 623-8807

For more information, e-mail: info@fil-trek.com or visit Fil-Trek.com

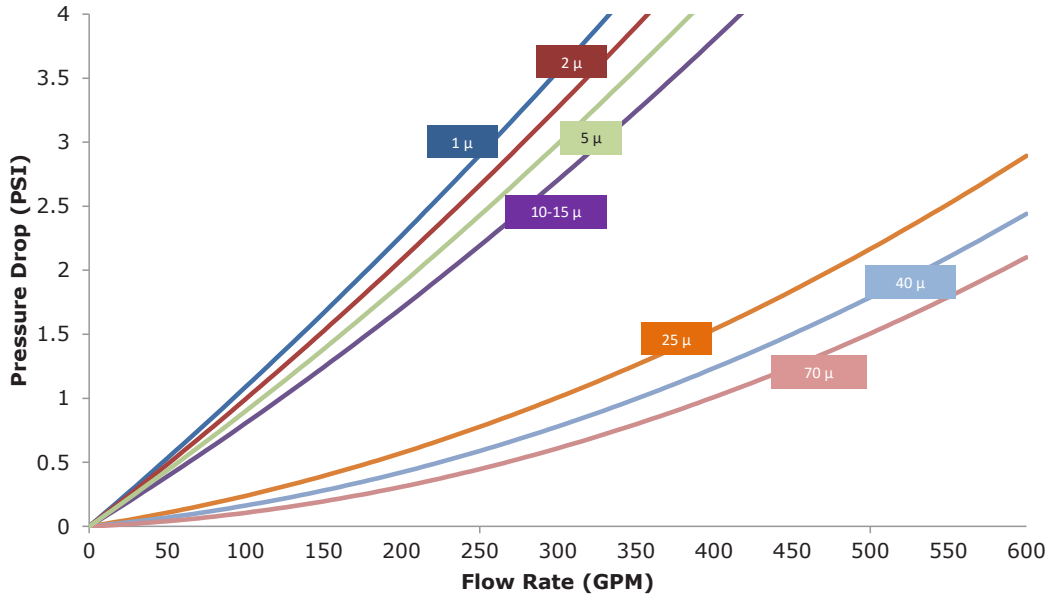
HF SERIES

High Flow Filter Cartridge

- 6.5" OD, 3" ID
- Vertical Pleat
- Outside to Inside Flow



FLOW CHART



Flow rates are representative of 60' long, polypropylene media

PRODUCT NOMENCLATURE

HF		-1	-60		-VI
MODEL	MEDIA	MICRON	LENGTH	CORE/CAPS	O-RING
HF – High Flow Series	Blank - Polypropylene (std) PE - Polyester MG - Microglass CO - Cotton CE - Cellulose NY - Nylon NX - Nomex	1 15 2 25 5 40 10 70	20 40 60 80	Blank - Polypropylene (std) TN - Tinned Steel	BN – Buna-N (std) ED – EPDM SI – Silicone VI – Viton

Additional customization may be available, contact Fil-Trek for part number information



55 Stafford Court, Cambridge, ON N1T 1B3 P (519) 623-7448 F (519) 623-8807

For more information, e-mail: info@fil-trek.com or visit Fil-Trek.com