



HSL SERIES

740/1440 PSI Single Bag Filter Housings

- High pressure single bag filter housing
- ASME "U" stamp
- Sour service design available

Our ASME "U" stamped SL Series bag filter built with upgraded design features better suited for high pressure and sour service applications.



SUITABLE USES



Air & Gas



Desalination



Coolant



Water



Electronics



Coatings



Oil & Gas



Chemical



Pulp & Paper



Power



Marine



Equipment

MEDIA

Accepts 1 double length (P2) bag filter

CONFIGURATION

Side in/bottom out*

*Other configurations available.

STANDARD

ANSI 300/740 PSI

DESIGN PRESSURE

ANSI 600/1440 PSI

STANDARD

100°F (38°C)

OPERATING TEMP

AVAILABLE MATERIALS

Carbon or Stainless Steel 304 or 316*

*Other materials available

Custom sizes, configurations, materials of construction and other options may be available. Please contact Fil-Trek

For drawings, flow charts, custom applications and filter cartridge information please visit www.fil-trek.com.

HSL SERIES

740/1440 PSI Single Bag Filter Housings

- High pressure single bag filter housings
- ASME "U" stamp
- Sour service design available



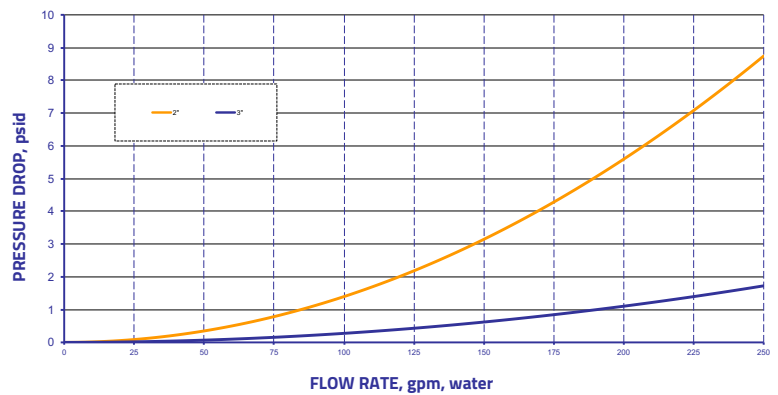
HOUSING SPECIFICATIONS

Inlet/Outlet	2" - 4"
Inlet/Outlet Connection Types	300# RFWN Flange 600# RFWN Flange <i>*Higher pressure units available upon request</i>
Clean/Dirty Drain	1/2" 3000# NPT
Vent	1/2" 3000# NPT
Gauges	1/2" 3000# NPT
Material of Construction	Carbon steel SS304 SS316 <i>*LDX2101, C276, AL6XN, 2205, 2207 & Monel 400 also available.</i>
Basket	1/8" on 3/16" perforated plate <i>*Other basket options available</i>
Certifications	U, UM, CE, NB, CRN

MODEL FLOW RATES

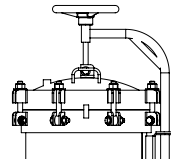
MODEL	BAG SIZE	FLOW RATE (GPM)
HSL112-2F	2	110
HSL112-3F	2	240

Flow rates are based on water at 2psid through empty housing with basket. Actual flow rate is dependant on fluid viscosity, micron rating, and media type. For actual flow rates based on your process, please contact Fil-Trek Corporation.

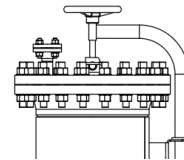


CLOSURE OPTIONS

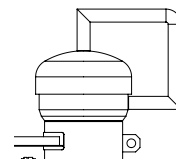
Swing Bolt
H1



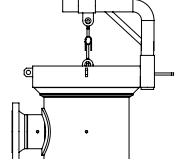
ANSI Closure
H6



QOC - Threaded
H10



QOC - Yoke
H9



PRODUCT NOMENCLATURE

S4	HSL	1	12	3F	740	-
MATERIAL	MODEL	# OF BASKETS	BASKET LENGTH	CONNECTION TYPE	DESIGN PRESSURE	OPTIONS
(-) - Carbon S4 - SS304** S6 - SS316**	HSL - ASME Code* EHSL - Non-Code	1	12 - Size 2	2F - 2" Flange 3F - 3" Flange 4F - 4" Flange	740 - ANSI 300/740 PSI 1440 - ANSI 600/1440 PSI	See "Housing Options" for options

*HSL series is an ASME code stamped housing. This vessel is also available in an industrial non-code design. For non-code, add the prefix "E" to the HSL in the part number



55 Stafford Court, Cambridge, ON N1T 1B3 P (519) 623-7448 F (519) 623-8807

For more information, e-mail: info@fil-trek.com or visit Fil-Trek.com

HSL SERIES

740/1440 PSI Single Bag Filter Housings

- High pressure single bag filter housings
- ASME "U" stamp
- Sour service design available

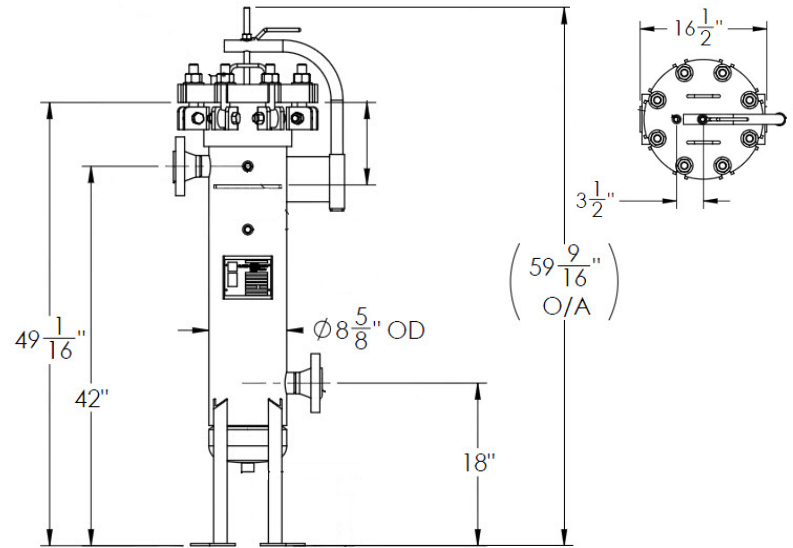


HOUSING OPTIONS

*Indicates standard configuration

Configuration	(-) – Side in/Bottom out*
Options	A – Side in/side out D – Side in/out Same Side
Basket	(-) – 1/8" on 3/16" perforated basket*
Options	MB ___ – Mesh lined basket (insert mesh size in blank space)
Finish	(-) – Paint "National Blue" (std for CS)*
Options	(-) – Bead Blast (std for SS304/SS316)* EP1 – Electro polish Inside/Outside EP2 – Inside only EP3 – Outside only PP – Passivation
O-Ring	(-) – Buna-N*
Options	ED – EPDM VI – Viton SI – Silicone TEV – Teflon encapsulated Viton
Sour Service	(-) – None*
	SR – Sour service, see below changes to design
Closure	(-) – Swing Bolt*
Options	H6 - ANSI Closure H10 - Quick Open Closure - Threaded H9 - Quick Open Closure - Yoke
Accessories	Direct Reading Gauge DP Gauge Safety Relief Valves Vent Valves Drain Valves Air Eliminator Omega Springs Balloon/Liquid Displacer Bag Magnets

MODEL DIMENSIONAL DETAILS



Dimensions above are based on standard configuration 'C', side in-bottom out. Contact factory for weights and dimensions for all other model configurations

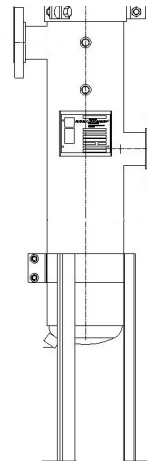
FOR SOUR SERVICE

- Corrosion allowance, 1/8" for CS, 1/16 for SS
- Radiograph/RT-1
- PWHT for carbon steel
- All butt welds

CONFIGURATION OPTIONS

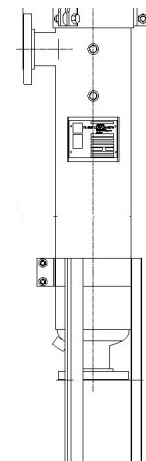
Style A

Side in/Side out



Style C

Side in/Bottom Out
HSL Standard Design



Style D

Side in/Side Out
Same side

